



## Land At Woolleys Farm,

Backwell Common, Backwell, Bristol, BS48 3AF

Guide Price:  
£375,000

- Land totalling approx. 2.2 acres
- Outbuilding on-site approx. 1330 sq ft
- Countryside location
- Electric on-site

2.2 acres of greenbelt land in stunning situation with existing 1300 square feet approx. barn previously used for agricultural machinery plus smaller barn.

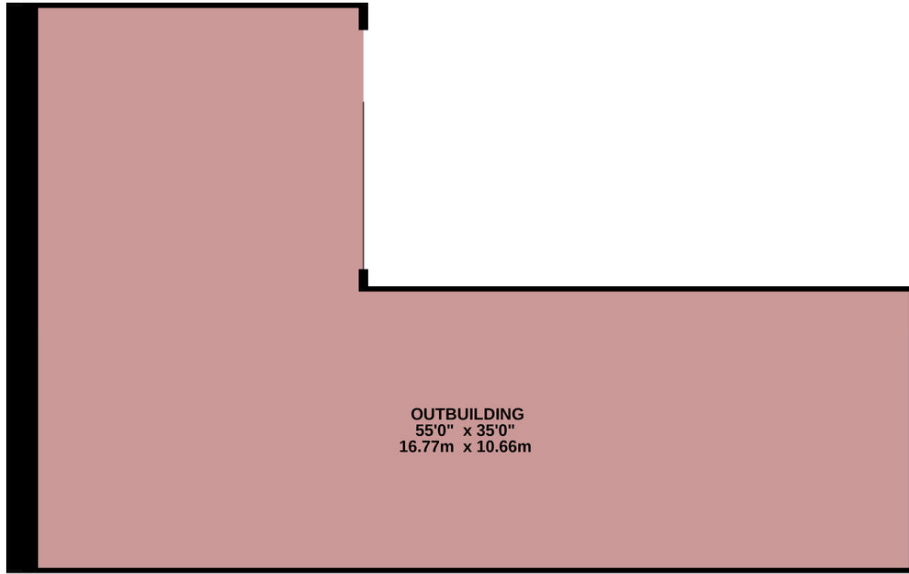
01275 406880  
[www.debbiefortune.co.uk](http://www.debbiefortune.co.uk)

debbie fortune



# Backwell Common, Backwell, BS48 3AF

GROUND FLOOR  
1330 sq. ft. (123.5 sq. m.) approx.



TOTAL FLOOR AREA : 1330 sq. ft. (123.5 sq. m.) approx.

Whilst every attempt has been made to ensure the accuracy of the floorplan contained here, measurements of doors, windows, rooms and any other items are approximate and no responsibility is taken for any error, omission or mis-statement. This plan is for illustrative purposes only and should be used as such by any prospective purchaser. The services, systems and appliances shown have not been tested and no guarantee as to their operability or efficiency can be given.  
Made with Metropix ©2020



Debbie Fortune Estate Agents, 2-4 Dark Lane, Backwell, Bristol, BS48 3NP

1. These particulars are produced in good faith, are set out as a general guide only and do not constitute any part of a contract. 2. No person in the employment of or agent of or consultant to Debbie Fortune estate agents has any authority to make or give any representation or warranty whatsoever in relation to this property. 3. Measurements, areas and distances are approximate, floor plans and photographs are for guidance purposes only and dimensions, shapes and precise locations may differ. 4. It must not be assumed that the property has all the required, planning or building regulations consent and that appliances referred to in the details are in safe and working order.

